



# Control Systems & Equipment Ltd.

Unit 3, Wessex Road, Bourne End, Bucks, SL8 5DT.

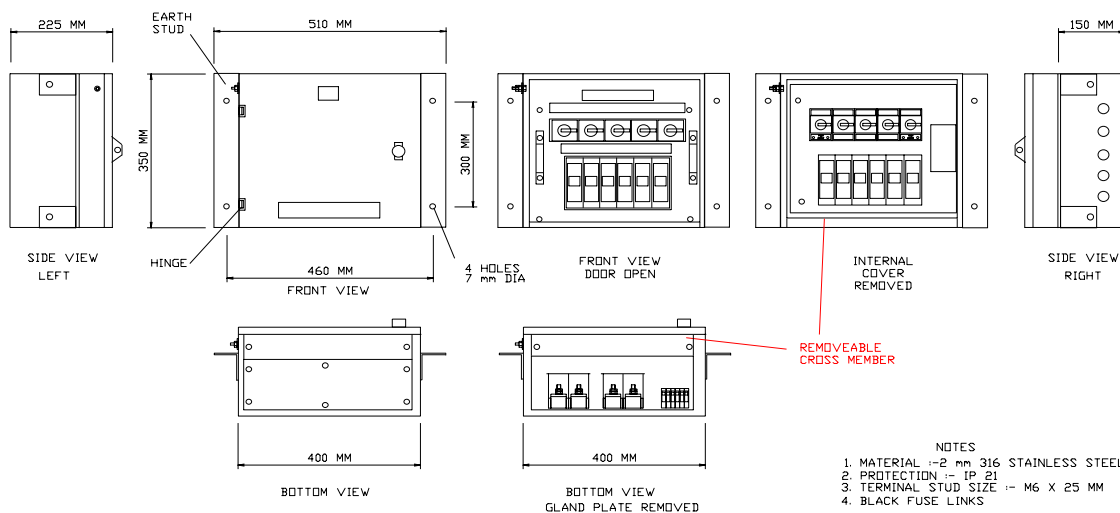
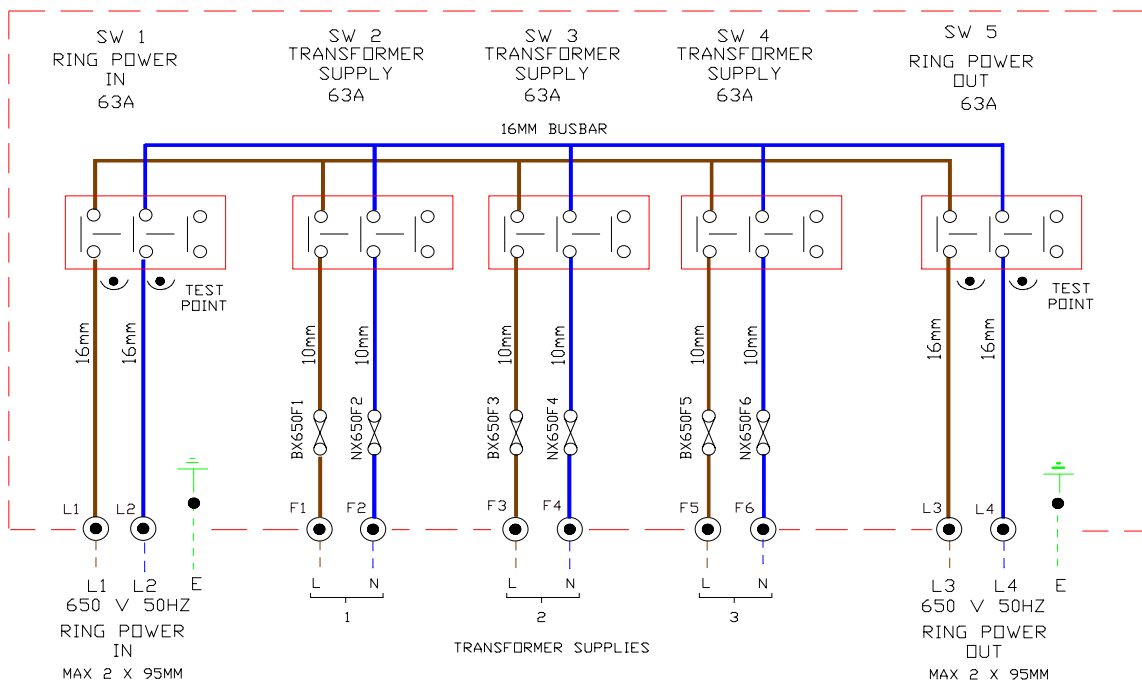
Tel :- 01628 533002 Fax :- 01628 528133

E-mail :- [info@consysequip.com](mailto:info@consysequip.com)

Web :- [www.powerbox.org.uk](http://www.powerbox.org.uk)

## The Power Box SIG 25

**Full size Dual supply Individual transformer isolation Fully enclosed Removable cross-member**



- NOTES
1. MATERIAL :- 2 mm 316 STAINLESS STEEL
  2. PROTECTION :- IP 21
  3. TERMINAL STUD SIZE :- M6 X 25 MM
  4. BLACK FUSE LINKS