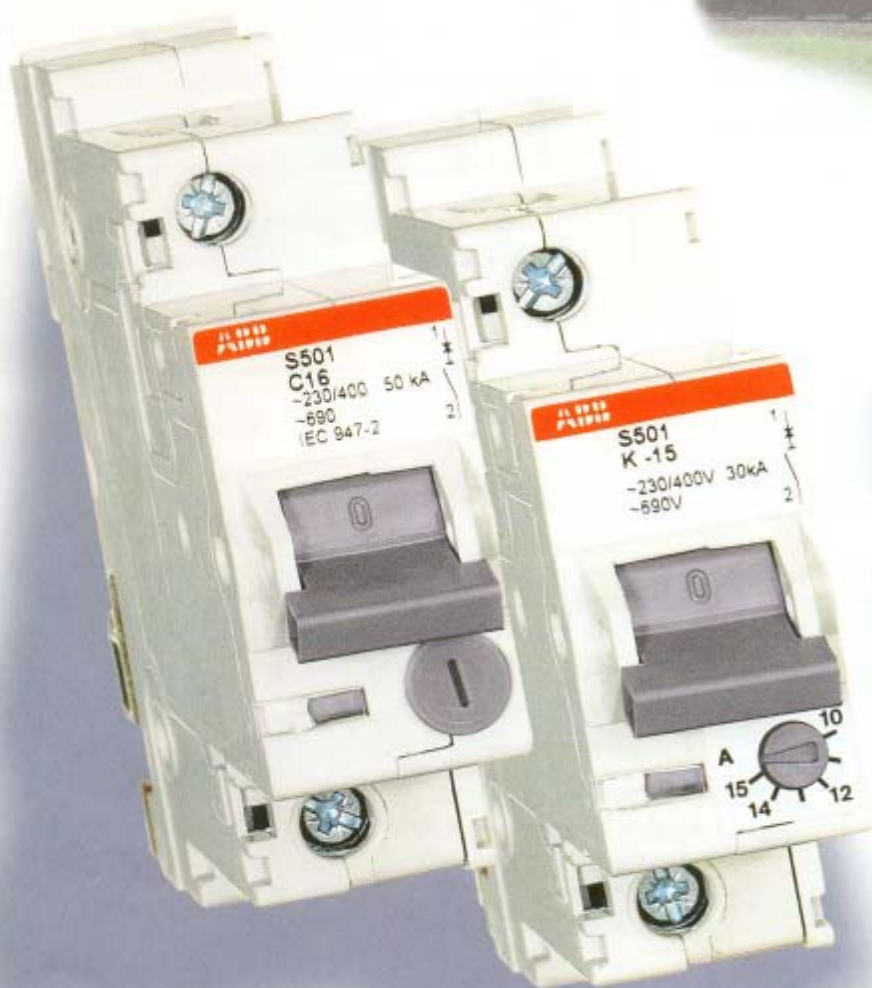


Heavy Duty Circuit Breaker S500 for railway applications



S500-B, C, D

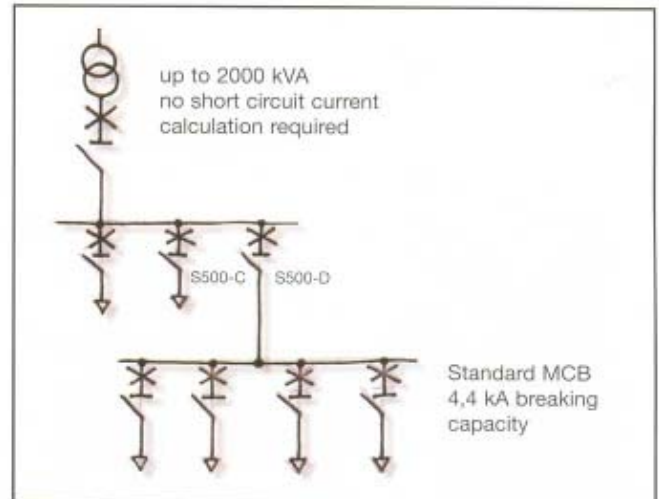


Technical data according to IEC947-2 / IEC898

Trip characteristics:	B, C, D
Number of poles:	1, 2, 3, 4, + NA
Breaking capacity (230/400 VAC) I_{cu} :	50kA (230/400 VAC)
Rated current I_n :	6 ... 63A / non adjustable
Rated voltage U_n :	690 VAC
Impulse withstand voltage U_{imp} :	8kV
Application:	Cable protection, industrial installation and back-up protection

Important features

- High breaking capacity, 50kA at 415VAC
- Extremely fast and energy-limiting breaking
- Excellent selectivity to upstream overcurrent devices
- Back-up protection to the downstream connected MCB's
- Immediate readiness for remake after a fault
- Safety position- and contact indication
- No faults due to ageing



S500UC-B, K

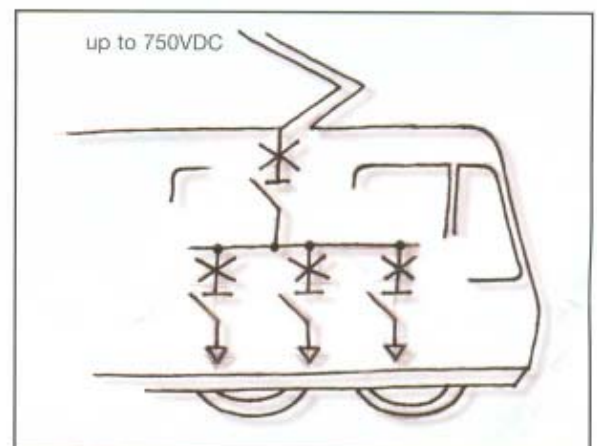


Technical data according to IEC947-2 / IEC898

Trip characteristics:	B, K
Number of poles:	1, 2, 3, 4, 5, 6
Breaking capacity I_{cu} :	30kA up to 750VDC
Rated current I_n - B = non adjustable:	6 ... 63A =
- K = adjustable:	0.1...45A
Rated voltage U_n 1-pole:	250 VDC
2-pole:	500 VDC
3-pole:	750 VDC
Application:	DC-networks, subways, tramways, charging sets and signaling circuits

Important features

- High breaking capacity up to 750VDC + 20%
- Fixed- and adjustable versions
- Polarity irrelevant for connection
- Fuse exchange not required
- No danger by closing of an existing short circuit
- Safety position- and contact indication
- Wide range of accessories



S500-K, KM

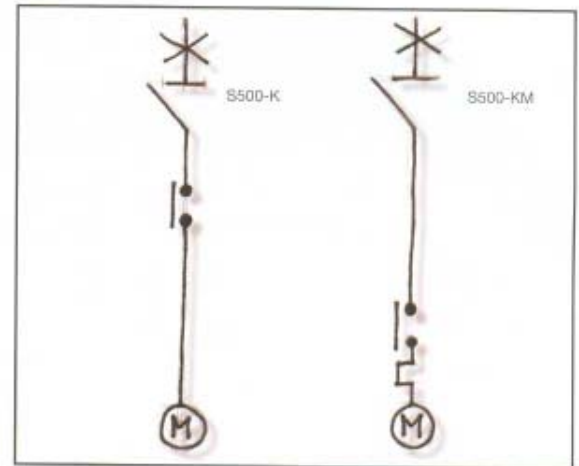


Technical data according to IEC947-2

Trip characteristics:	K, KM (magnetic only)
Number of poles:	1, 2, 3, 4 + NA
Breaking capacity (230/400 VAC) I_{cu} :	50kA
Rated current I_n - K = adjustable:	0.1...45A
- KM = non adjustable:	1.6...75A
Rated voltage U_n :	690 VAC
Impulse withstand voltage U_{imp} :	8kV
Application:	Single or three phase motor protection, machine tools, transformers

Important features

- High breaking capacity, 30/50kA at 415VAC
- High self protection level and all pole breaking on fault
- Coordination table for typ 2 coordination according to IEC 947 available
- Special electromagnetic release (S500-KM)
- Same frame size for all rated currents
- Safety position- and contact indication
- Can be equipped with undervoltage and shunt releases, auxiliary and signal contacts



F500-C, D, K

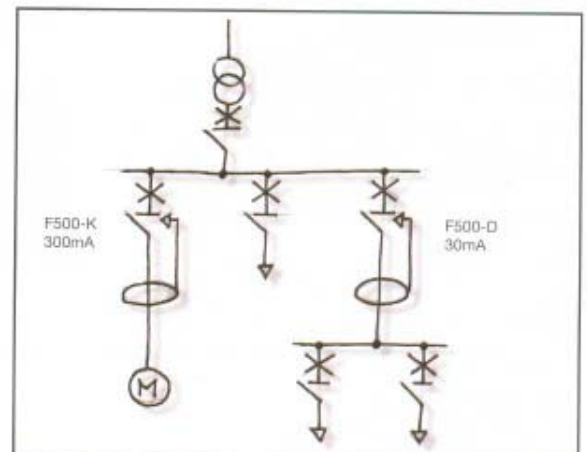


Technical data according to IEC947-2

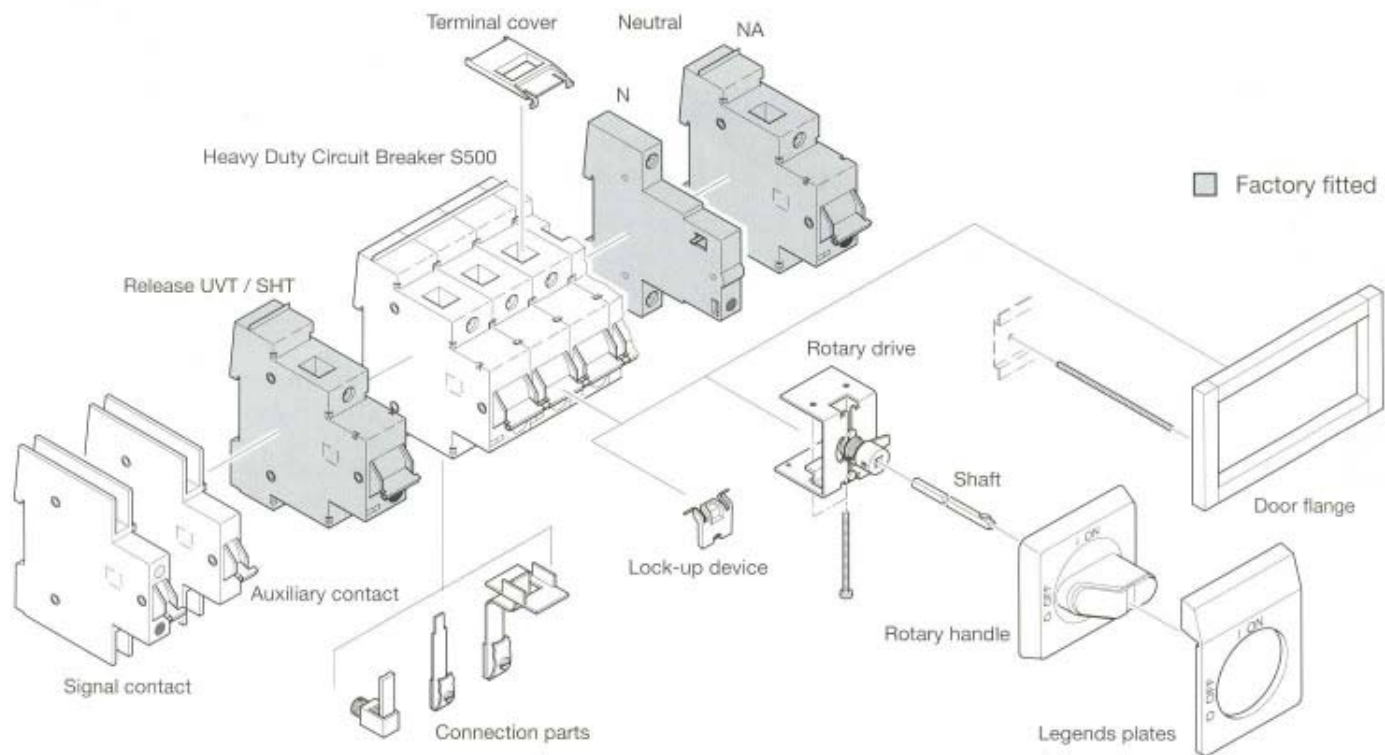
Trip characteristics:	C, D, K
Number of poles:	2, 3, 4
Breaking capacity (230/400 VAC) I_{cu} :	30/50kA
Rated current I_n - C, D = non adjustable:	6 ... 63A
- K = adjustable:	0.1...45A
Rated trip current I_{n} :	0,01A / 0,03A / 0,3A
Rated voltage U_n :	690 VAC
Impulse withstand voltage U_{imp} :	8kV
Application:	Industrial circuits with high fault currents e.g. engine sheds

Important features

- High breaking capacity, 30/50kA at 415VAC
- Fixed- and adjustable versions
- Equipped with a residual current protection for sinusoidal alternating and pulsating DC fault currents
- Safety position- and all pole contact indication
- Compact and economical solution



Overview



S500 rail references

- Locomotive 2000
Switzerland, Norway, Finland, Greece, Hongkong, India
- Narrow gauge railways
Glacier Express (FoB), Panoramic Express (MoB), Top of Europe
- Tramways
Zurich, Helsinki, Dusseldorf
- Underground
London, Hongkong, Shanghai, Singapore, Guangzhou

ABB

CMC Carl Maier + Cie AG
Electrical protection apparatus
CH-8201 Schaffhausen / Switzerland
Phone ..41 52 633 81 11, Fax .. 41 52 633 82 22